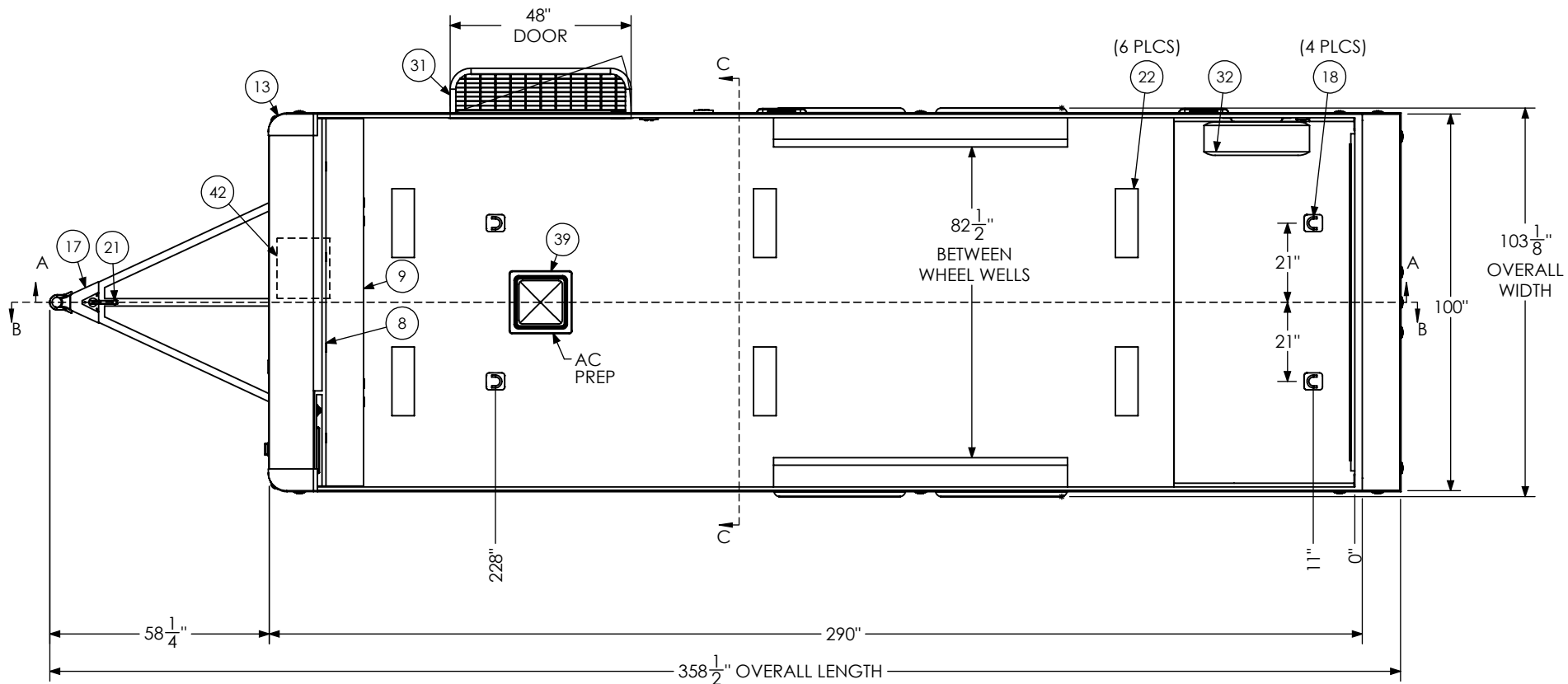


ITEM NO.	DESCRIPTION	NOTES	QTY.
1	Axle, Dexter	5200#, 10 UP, 94HF, 78AB	2
8	BTL Cabinet, Overhead		1
9	BTL Cabinet, Straight Base		1
10	Battery Box		1
11	Battery Vent		1
12	Bumpers	1"	1
13	Cast Corners		1
14	Caster Wheel		2
17	Coupler	2 5/16" Ball, 14,000#	1
18	D-Ring	5,000	4
19	Door, Entrance	48" x 78" RHS	1
21	Jack - Top Wind		1
22	Light	18" 12v LED	6
23	Load Center	30 Amp L/C - 60 Amp Conv	1
24	Loading Light - LED	13.7" 12V Loading Light	3
25	Motorbase Plug	30 Amp	1
26	Outlet	120V 20 Amp	4
27	Paddle Latch		2
28	Ramp Extension	16" Transition Flap	1
31	Slide Out Step	48" Wide	1
32	Spare Tire Assembly		1
33	Spring Assist		1
34	Switch	12v Cutoff	1
35	Switch	2 - 12V Switches	1
36	Switch	1 - 12V Switch	1
38	Tire	ST225/75R15	4
39	Vent, Roof		1
42	Winch Plate		1

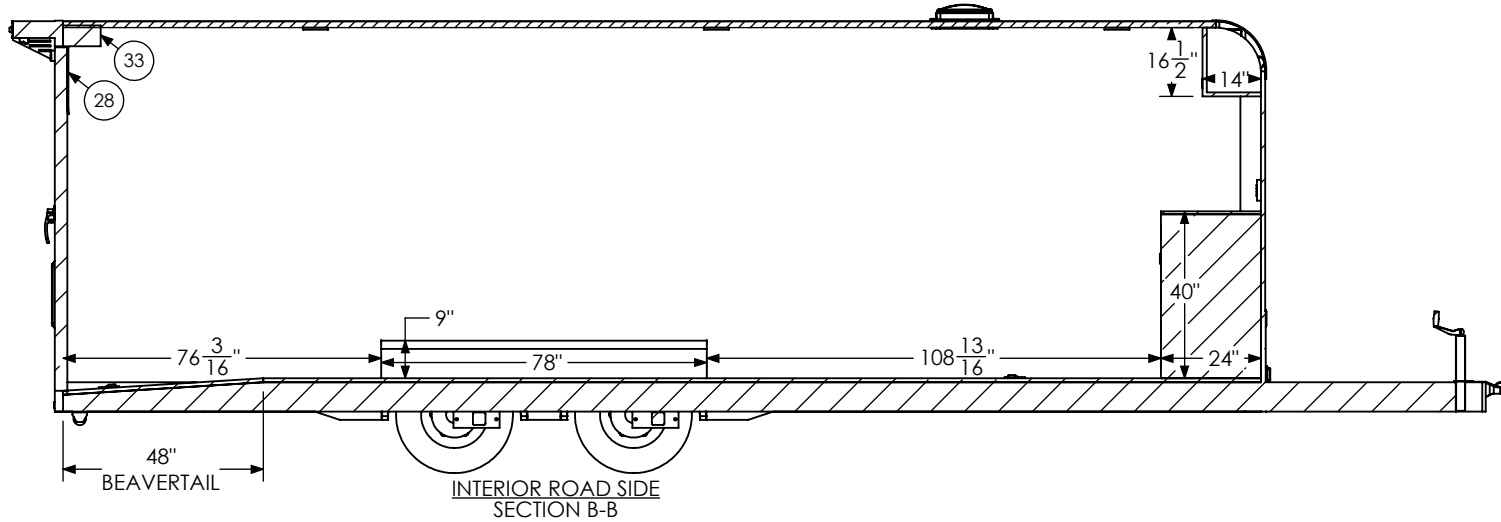
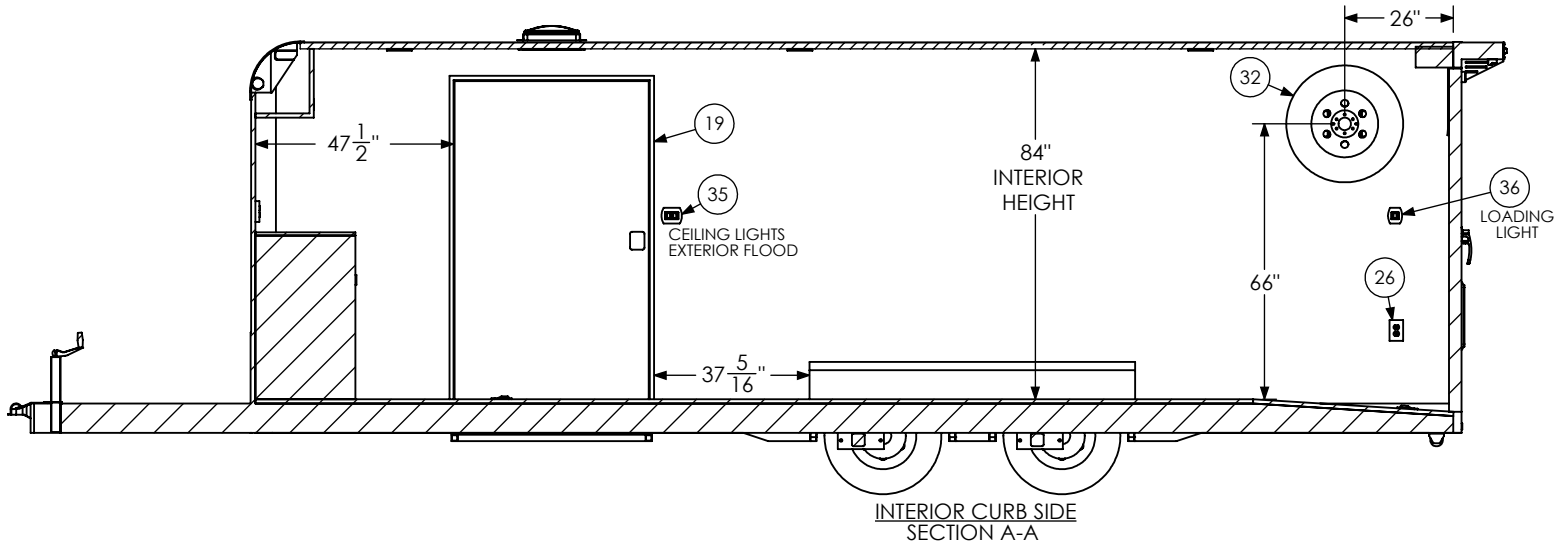
PROPRIETARY AND CONFIDENTIAL
 THE INFORMATION CONTAINED IN THIS DRAWING IS THE
 SOLE PROPERTY OF INTECH TRAILERS. ANY REPRODUCTION
 IN PART OR AS A WHOLE WITHOUT THE WRITTEN PERMISSION
 OF INTECH TRAILERS IS PROHIBITED.

SCALE: 1:50	NAME	DATE	<i>inTech Trailers</i>	
DRAWN	NjM	2/7/24	inTech BTL8.5x24TA3 - STANDARD BOM	
ALL DIMENSIONS ARE IN INCHES AND ARE NOMINAL. DIMENSIONS ON ACTUAL TRAILER MAY VARY FROM WHAT IS SHOWN ON PRINT BASED ON ACTUAL FRAMING AND TRAILER STRUCTURE. UNLESS NOTED AS CRITICAL		DWG. NO.	SHEET 1 OF 5	REV.
		BTL8.5x24TA3 Trailer Assembly - Standard		J



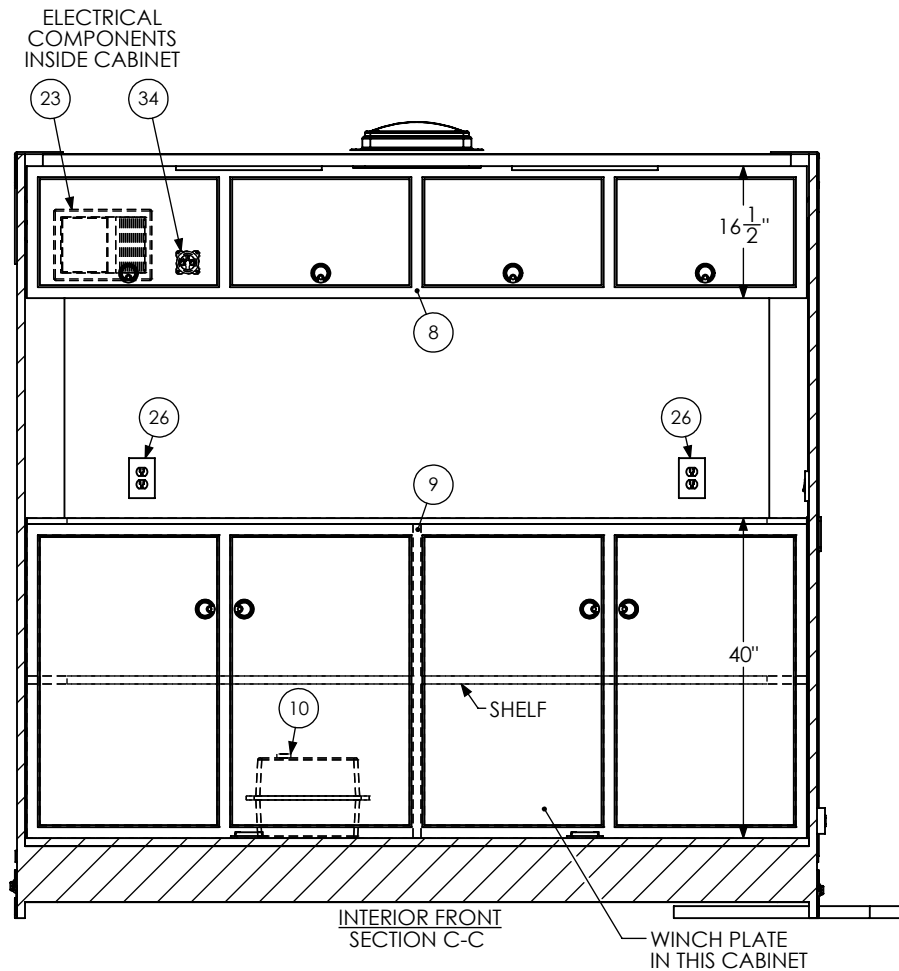
PROPRIETARY AND CONFIDENTIAL
 THE INFORMATION CONTAINED IN THIS DRAWING IS THE
 SOLE PROPERTY OF INTECH TRAILERS. ANY REPRODUCTION
 IN PART OR AS A WHOLE WITHOUT THE WRITTEN PERMISSION
 OF INTECH TRAILERS IS PROHIBITED.

SCALE: 1:42	NAME	DATE	inTech Trailers	
DRAWN	NjM	2/7/24	inTech BTL8.5x24TA3 - STANDARD FLOORPLAN	
ALL DIMENSIONS ARE IN INCHES AND ARE NOMINAL. DIMENSIONS ON ACTUAL TRAILER MAY VARY FROM WHAT IS SHOWN ON PRINT BASED ON ACTUAL FRAMING AND TRAILER STRUCTURE. UNLESS NOTED AS CRITICAL			DWG. NO. BTL8.5x24TA3 Trailer Assembly - Standard	SHEET 2 OF 5 REV. J



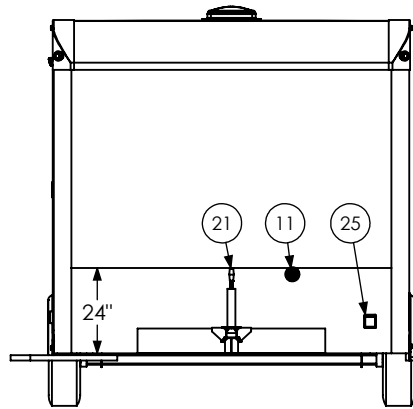
SCALE: 1:46	NAME	DATE	<i>inTech Trailers</i>	
DRAWN	NJM	2/7/24	inTech BTL8.5x24TA3 - STANDARD INTERIOR SIDES	
ALL DIMENSIONS ARE IN INCHES AND ARE NOMINAL. DIMENSIONS ON ACTUAL TRAILER MAY VARY FROM WHAT IS SHOWN ON PRINT BASED ON ACTUAL FRAMING AND TRAILER STRUCTURE. UNLESS NOTED AS CRITICAL			DWG. NO. BTL8.5x24TA3 Trailer Assembly - Standard	REV. J

PROPRIETARY AND CONFIDENTIAL
THE INFORMATION CONTAINED IN THIS DRAWING IS THE
SOLE PROPERTY OF INTECH TRAILERS. ANY REPRODUCTION
IN PART OR AS A WHOLE WITHOUT THE WRITTEN PERMISSION
OF INTECH TRAILERS IS PROHIBITED.

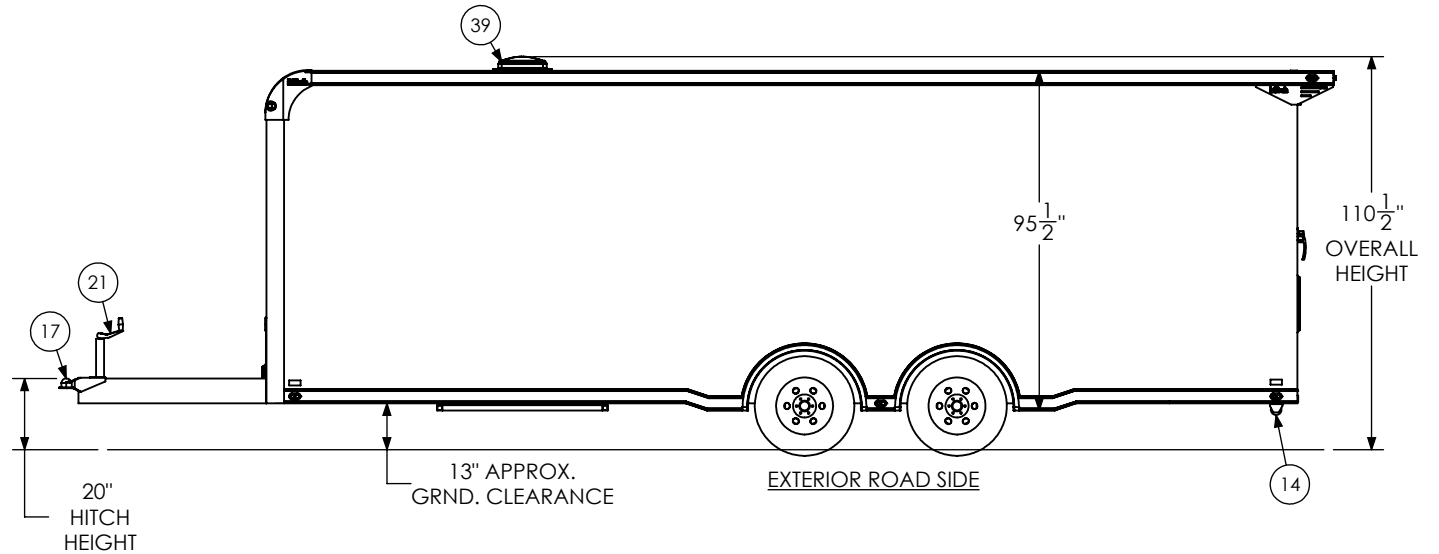


SCALE: 1:24	NAME	DATE	<i>inTech Trailers</i>	
DRAWN	NjM	2/7/24	inTech BTL8.5x24TA3 - STANDARD INTERIOR FRONT	
ALL DIMENSIONS ARE IN INCHES AND ARE NOMINAL. DIMENSIONS ON ACTUAL TRAILER MAY VARY FROM WHAT IS SHOWN ON PRINT BASED ON ACTUAL FRAMING AND TRAILER STRUCTURE. UNLESS NOTED AS CRITICAL			DWG. NO. BTL8.5x24TA3 Trailer Assembly - Standard	SHEET 4 OF 5 REV. J

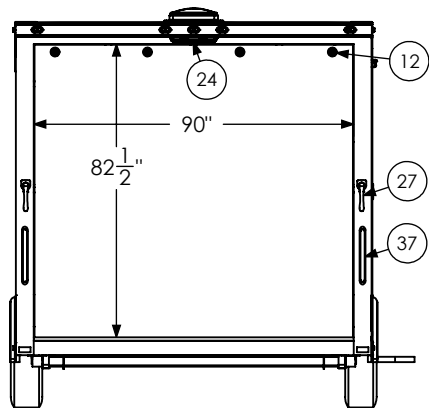
PROPRIETARY AND CONFIDENTIAL
THE INFORMATION CONTAINED IN THIS DRAWING IS THE
SOLE PROPERTY OF INTECH TRAILERS. ANY REPRODUCTION
IN PART OR AS A WHOLE WITHOUT THE WRITTEN PERMISSION
OF INTECH TRAILERS IS PROHIBITED.



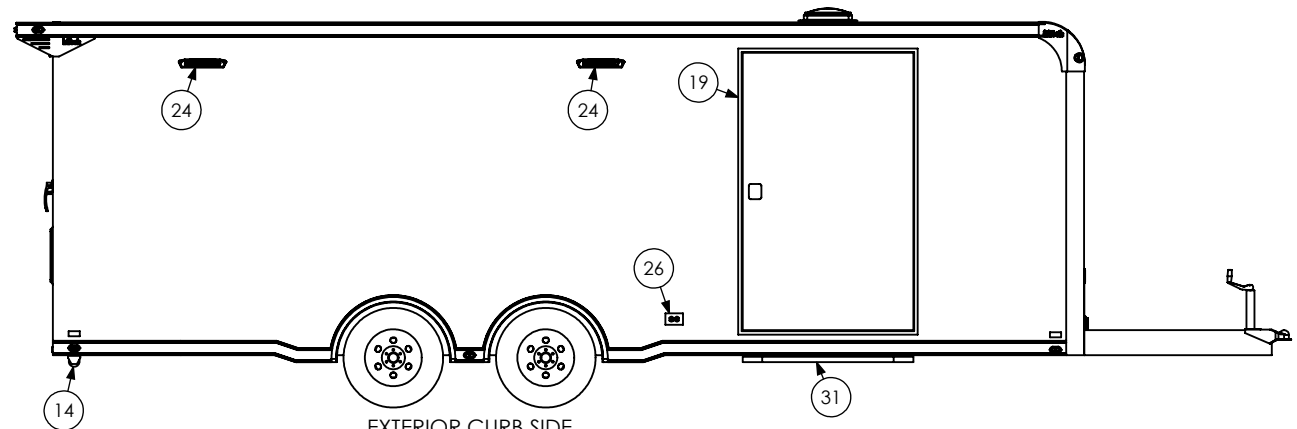
EXTERIOR FRONT



EXTERIOR ROAD SIDE



EXTERIOR REAR



EXTERIOR CURB SIDE

PROPRIETARY AND CONFIDENTIAL
THE INFORMATION CONTAINED IN THIS DRAWING IS THE SOLE PROPERTY OF INTECH TRAILERS. ANY REPRODUCTION IN PART OR AS A WHOLE WITHOUT THE WRITTEN PERMISSION OF INTECH TRAILERS IS PROHIBITED.

SCALE: 1:54	NAME	DATE	<i>inTech Trailers</i>	
DRAWN	NjM	2/7/24	inTech BTL8.5x24TA3 - STANDARD EXTERIOR	
ALL DIMENSIONS ARE IN INCHES AND ARE NOMINAL. DIMENSIONS ON ACTUAL TRAILER MAY VARY FROM WHAT IS SHOWN ON PRINT BASED ON ACTUAL FRAMING AND TRAILER STRUCTURE. UNLESS NOTED AS CRITICAL		DWG. NO. BTL8.5x24TA3 Trailer Assembly - Standard	SHEET 5 OF 5	REV. J